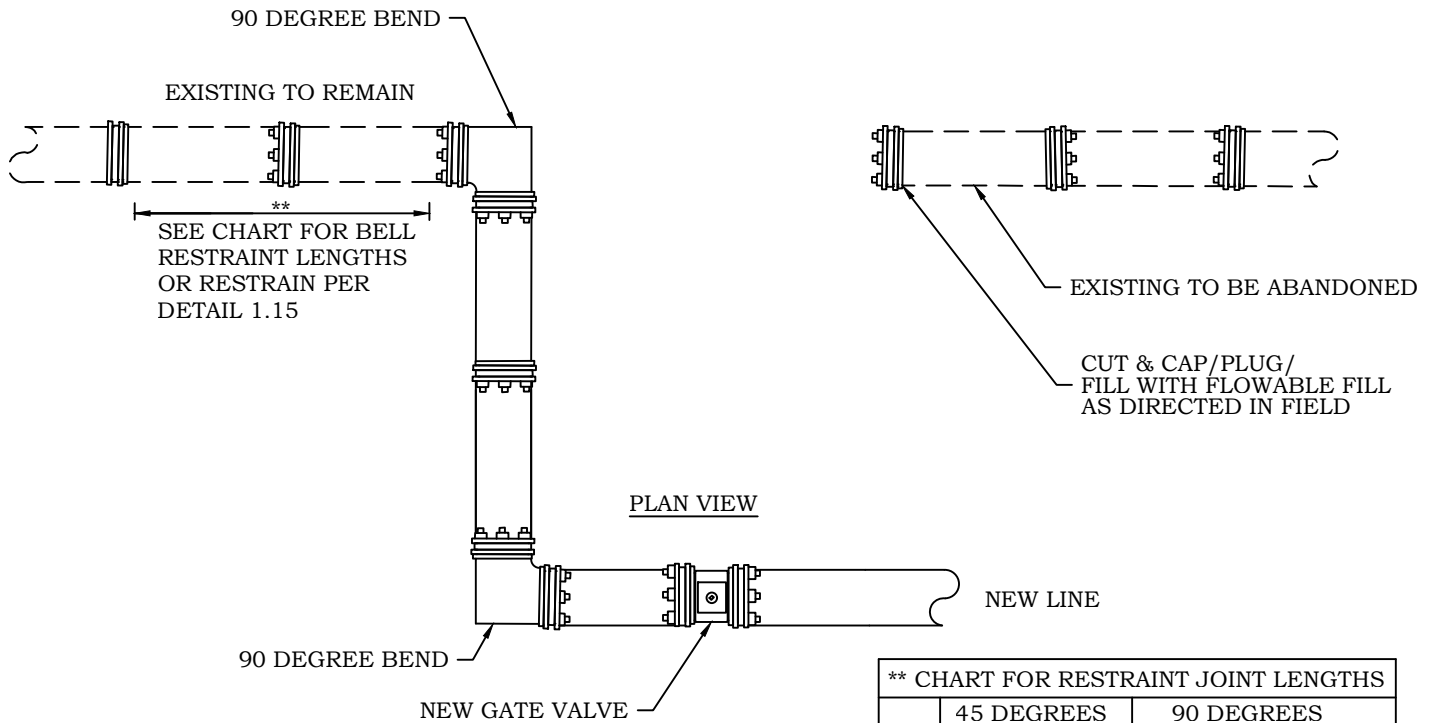


PLAN VIEW



PLAN VIEW

NOTES:

1. DETAIL IS TO BE A GUIDELINE FOR CAPPING WATER MAINS AND IS SUBJECT TO CHANGE DUE TO INDIVIDUAL PROJECT CIRCUMSTANCES PER AUD APPROVAL.
2. ALL FITTINGS SHALL BE RESTRAINED JOINT.
3. "DEAD-MAN" BLOCK TO BE POURED A MINIMUM OF 24 HOURS IN ADVANCE. AUD INSPECTOR WILL DIRECT WHEN WATER MAIN MAY BE CUT.
4. AUD INSPECTOR MUST BE PRESENT DURING INSTALLATION.
5. WATER SERVICE WILL BE INTERRUPTED DURING TEE AND VALVE INSTALLATION. SERVICE TO BE RESTORED IMMEDIATELY UPON COMPLETION.
6. 90° BENDS WILL NOT BE USED UNLESS PRIOR APPROVAL BY AUD.

** CHART FOR RESTRAINT JOINT LENGTHS		
	45 DEGREES	90 DEGREES
6"	8	20
8"	11	25
10"	13	30
12"	15	35
14"	17	41
16"	19	45
18"	21	50
20"	23	55
24"	27	64
30"	32	77

NO REVISION OR MODIFICATION OF THIS DETAIL SHALL BE MADE WITHOUT PRIOR WRITTEN APPROVAL FROM AUGUSTA UTILITIES DEPARTMENT.

REVISED: JANUARY 2018

**PROPOSED WATER LINE CONNECTION
TO EXISTING WATERLINE**

AUD DETAIL 1.14

**AUGUSTA UTILITIES DEPARTMENT
452 WALKER STREET, SUITE 200
AUGUSTA, GA 30901**

