

Plan 2

This plan is a modified version of Plan 1 drawn with the primary intent of reducing the deviation of the district sizes from Plan 1.

Precincts Split by Plan 2

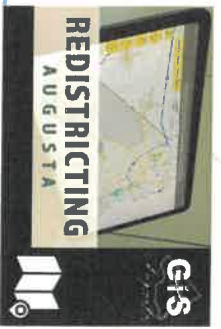
Precinct	Description	District move to
115	Split along Allen Station Road - aesthetics	8
308	Moves Spring House Apartments	7
310	Split along Butler Creek	4
402	Moves Ft. Gordon barracks	8
406	Split along Tobacco Road to power lines	5
502	Split along Morgan Road	4
509	Unites Woodlake	4
604	Split along Mike Padgett Highway	1
605	Split along Bobby Jones	2
608	Split along Brown Road	8
702	Moves Berckman Road condos	1
805	Split along power line to Spirit Creek	1
807	Split along Ulm Road and others	4

Status of Identified Neighborhoods

Neighborhood	Status
Barefield	Remains in Dist 8
Forest Hills	United
Green Forest/Butler Manor	Separated by Morgan Road
Pepperidge	United
Quail Hollow	Not put back together
Sand Hills	Not put back together
Sand Ridge	United
Summerville	United
Woodlake	United on the East side of the creek, but still split at creek

Whole Precinct Moves

Precinct	Moved To
305	Moved to Dist 7
401	Moved to Dist 6

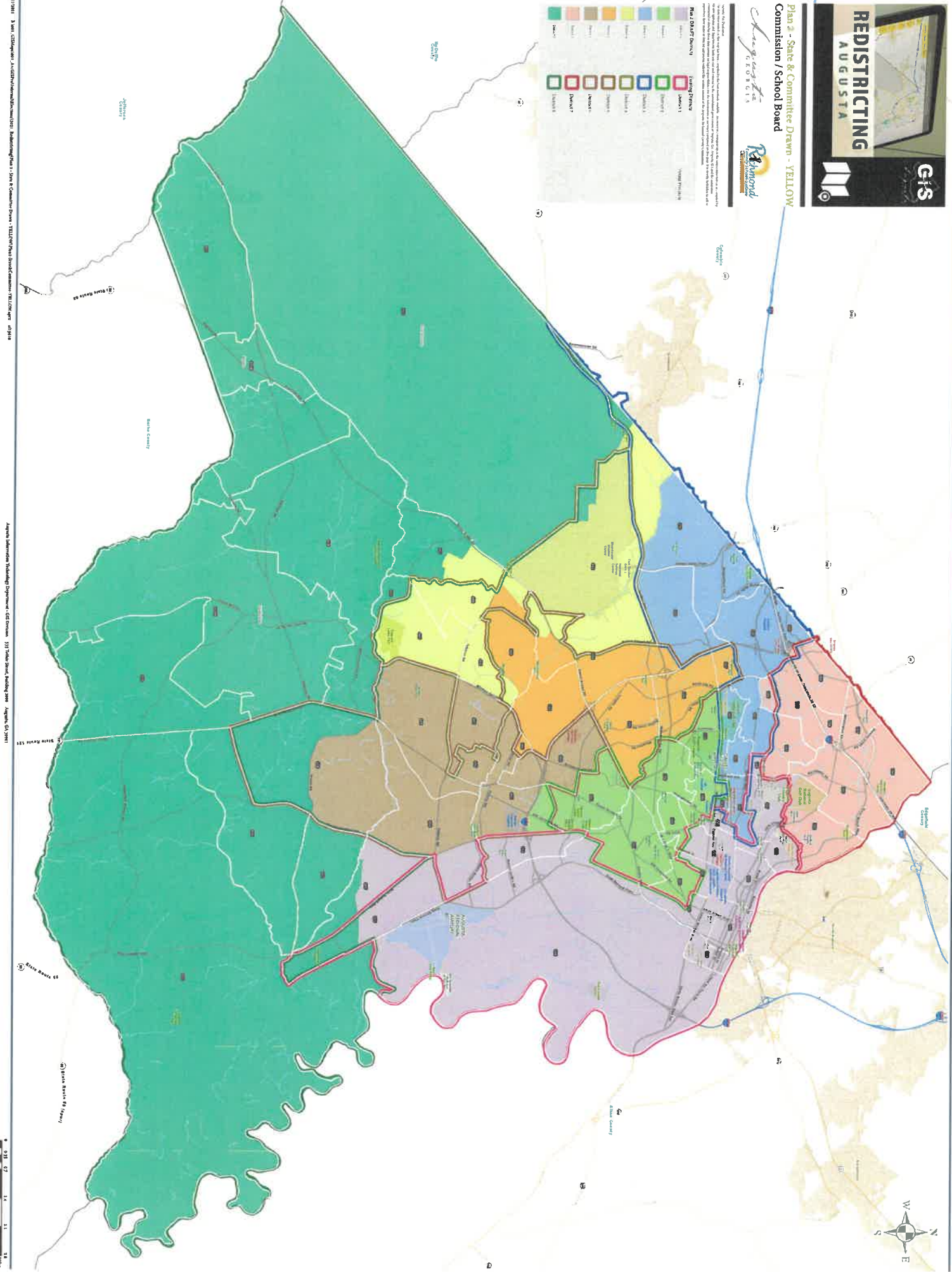


# Plan 2 - State & Committee Drawn - YELLOW Commission / School Board



**Legend**

Color	Category	Label
Green	Water	Water
Light Green	Water	Water
Yellow	Water	Water
Orange	Water	Water
Light Blue	Water	Water
Blue	Water	Water
Dark Blue	Water	Water
Light Purple	Water	Water
Dark Purple	Water	Water
Light Green	Water	Water
Yellow	Water	Water
Orange	Water	Water
Light Blue	Water	Water
Blue	Water	Water
Dark Blue	Water	Water
Light Purple	Water	Water
Dark Purple	Water	Water



# PLAN 2 - STATE & COMMITTEE DRAWN DISTRICTS - YELLOW

User: Richmond  
 Plan Name: RichmondCCSB-CommitteeDraft-2021  
 Plan Type: Local

## Population Summary

Thursday, November 11, 2021

2:31 PM

**Summary Statistics:**  
 Population Range: 25,488 to 26,220  
 Ratio Range: 0.03  
 Absolute Range: -338 to 394  
 Absolute Overall Range: 732  
 Relative Range: -1.31% to 1.53%  
 Relative Overall Range: 2.83%  
 Relative Mean Deviation: 189.63  
 Relative Mean Deviation: 0.73%  
 Standard Deviation: 227.11

District	Population	Deviation	% Devn.	[18+ Pop]	[% 18+ Pop]	[% NH_Whd]	[% NH_Blkl]	[% Hispanic Origin]	[% NH_Asn]	[% NH_Indl]	[% NH_Hwnl]	[% NH_Oth]	[% NH_2+ Races]
001	25,573	-253	-0.98%	20,115	78.66%	26.89%	64.29%	3.28%	1.53%	0.18%	0.07%	0.49%	3.27%
002	25,488	-338	-1.31%	19,142	75.1%	22.61%	68.83%	4.06%	0.82%	0.21%	0.06%	0.32%	3.1%
003	25,951	125	0.48%	21,019	80.99%	42.36%	43.96%	4.99%	3.1%	0.28%	0.18%	0.58%	4.55%
004	25,829	3	0.01%	19,595	75.86%	19.69%	63.73%	9.04%	2.36%	0.3%	0.31%	0.36%	4.2%
005	25,883	57	0.22%	19,278	74.48%	16.32%	71.85%	6.39%	1.09%	0.25%	0.27%	0.31%	3.53%
006	26,005	179	0.69%	19,596	75.35%	28.24%	61.45%	4.76%	1.03%	0.29%	0.22%	0.48%	3.52%
007	26,220	394	1.53%	21,801	83.15%	56.14%	30%	4.95%	3.66%	0.14%	0.19%	0.51%	4.42%
008	25,658	-168	-0.65%	20,353	79.32%	52.2%	33.71%	6.84%	1.5%	0.34%	0.21%	0.45%	4.75%
<b>Total:</b>	<b>206,607</b>												
<b>Ideal District:</b>	<b>25,826</b>												

User: Richmond

Plan Name: RichmondCCSB-CommitteeDraft-2021

Plan Type: Local

# PLAN 2 - STATE & COMMITTEE DRAWN DISTRICTS - YELLOW

## Population Summary

Thursday, November 11, 2021

2:35 PM

### Summary Statistics:

Population Range: 25,488 to 26,220  
 Ratio Range: 0.03  
 Absolute Range: -338 to 394  
 Absolute Overall Range: 732  
 Relative Range: -1.31% to 1.53%  
 Relative Overall Range: 2.83%  
 Absolute Mean Deviation: 189.63  
 Relative Mean Deviation: 0.73%  
 Standard Deviation: 227.11

District	Population	Deviation	% Devn.	[18 + _Pop]	[% 18 + _Pop]	[% NH18 + _Wh]	[% NH18 + _Blk]	[% H18 + _Pop]	[% NH18 + _Asn]	[% NH18 + _Ind]	[% NH18 + _Hwn]	[% NH18 + _Races]	[% NH18 + _Oth]
001	25,573	-253	-0.98%	20,115	78.66%	29.99%	61.67%	2.93%	1.65%	0.2%	0.08%	2.82%	0.45%
002	25,488	-338	-1.31%	19,142	75.1%	26.33%	65.84%	3.71%	0.98%	0.18%	0.07%	2.56%	0.33%
003	25,951	125	0.48%	21,019	80.99%	44.65%	42.4%	4.83%	3.28%	0.23%	0.14%	3.98%	0.47%
004	25,829	3	0.01%	19,595	75.86%	21.96%	61.55%	9.31%	2.87%	0.33%	0.32%	3.38%	0.29%
005	25,883	57	0.22%	19,278	74.48%	19.19%	69.96%	5.84%	1.37%	0.24%	0.26%	2.88%	0.27%
006	26,005	179	0.69%	19,596	75.35%	31.76%	59.14%	4.1%	1.25%	0.34%	0.25%	2.85%	0.31%
007	26,220	394	1.53%	21,801	83.15%	58.7%	28.44%	4.56%	3.89%	0.14%	0.14%	3.64%	0.5%
008	25,658	-168	-0.65%	20,353	79.32%	53.66%	32.73%	6.79%	1.84%	0.37%	0.23%	4.01%	0.36%
<b>Total:</b>	<b>206,607</b>												
<b>Ideal District:</b>	<b>25,826</b>												

# PLAN 2

PRECINCT ID	NAME	ADDRESS	Split by Dist. A	Split by Dist. B	Split by Dist. C
115	Southside Baptist	3612 Mike Padgett Hwy	1	8	N/A
308	First Baptist Church	3500 Walton Way Ext	3	7	N/A
310	Providence Baptist Church	3850 Wrightsboro Rd	3	4	N/A
402	Mcduffie Woods CC	3431 Old McDuffie Rd	4	8	8
406	Jamestown CC	3647 Karleen Rd	4	5	N/A
502	Trinity CME Church	2930 Glenn Hills Dr	4	5	N/A
509	Windsor Spring Baptist Church	3692 Windsor Spring Rd	4	5	N/A
604	Southside Baptist	3612 Mike Padgett Hwy	1	6	N/A
605	Stevens Creek Church-Southside Campus	3358 Peach Orchard Rd	2	6	N/A
608	Pine Hill Baptist	4233 Old Waynesboro Rd	6	8	N/A
803	Jamestown CC	3647 Karleen Rd	4	8	N/A
805	Southside Baptist	3612 Mike Padgett Hwy	1	8	N/A
807	Jamestown CC	3647 Karleen Rd	4	8	N/A

# PLAN 2

SUBDIVISION NAME	Split by Dist. A	Split by Dist. B
Burch Grant	5	6
Fall Lines Equities Inc	4	8
Fleming Heights	2	6
Gate 5 Mobile Homes	4	8
Great Lakes Mobile Homes	4	8
Monticello	5	6
Mount Vernon	5	6
Norton Acres	2	6
Quail Hollow	4	5
Windsor Lake	6	8
Woodlake	4	5