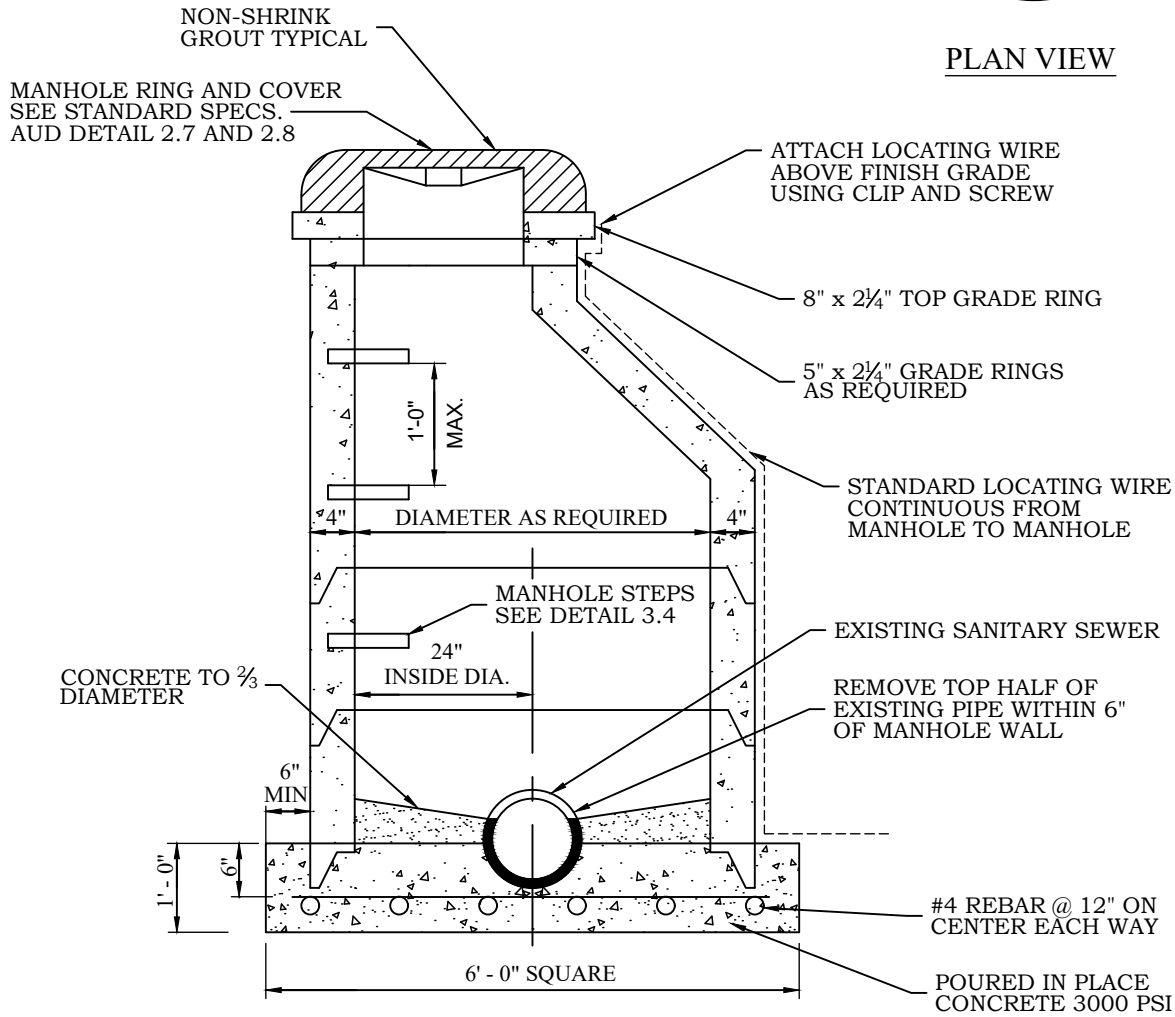


PLAN VIEW



PROFILE VIEW

NOTES:

1. MANHOLES WITH A DEPTH OF 5 VF OR LESS SHALL USE A 2'-0" CONCENTRIC CONE SECTION.
2. IF MANHOLE DEPTH EXCEEDS 20 VF WALL THICKNESS SHALL BE 6 INCHES.
3. CURVATURE OF INVERT TO HAVE LARGEST POSSIBLE RADIUS.
4. CONCRETE SHALL BE POURED TO THE SPRING LINE OF THE PIPE (PRECAST ONLY).
5. THE RING SHALL BE ANCHORED IN A MINIMUM OF 4 PLACES BY USE OF HITI ANCHORS OR APPROVED EQUAL.
6. NO MORE THAN 6" ADJUSTMENT BY RISERS ON RING AND COVER.
7. STEPS SHALL NOT BE PLACED OVER INVERTS IN OR OUT OF ANY PIPE.

NO REVISION OR MODIFICATION OF THIS DETAIL SHALL BE MADE WITHOUT PRIOR WRITTEN APPROVAL FROM AUGUSTA UTILITIES DEPARTMENT.

APPROVED JAN. 2021

REVISED: JANUARY 2021

DOGHOUSE MANHOLE

AUGUSTA UTILITIES DEPARTMENT
 452 WALKER STREET, SUITE 200
 AUGUSTA, GA 30901

AUD DETAIL 2.5

