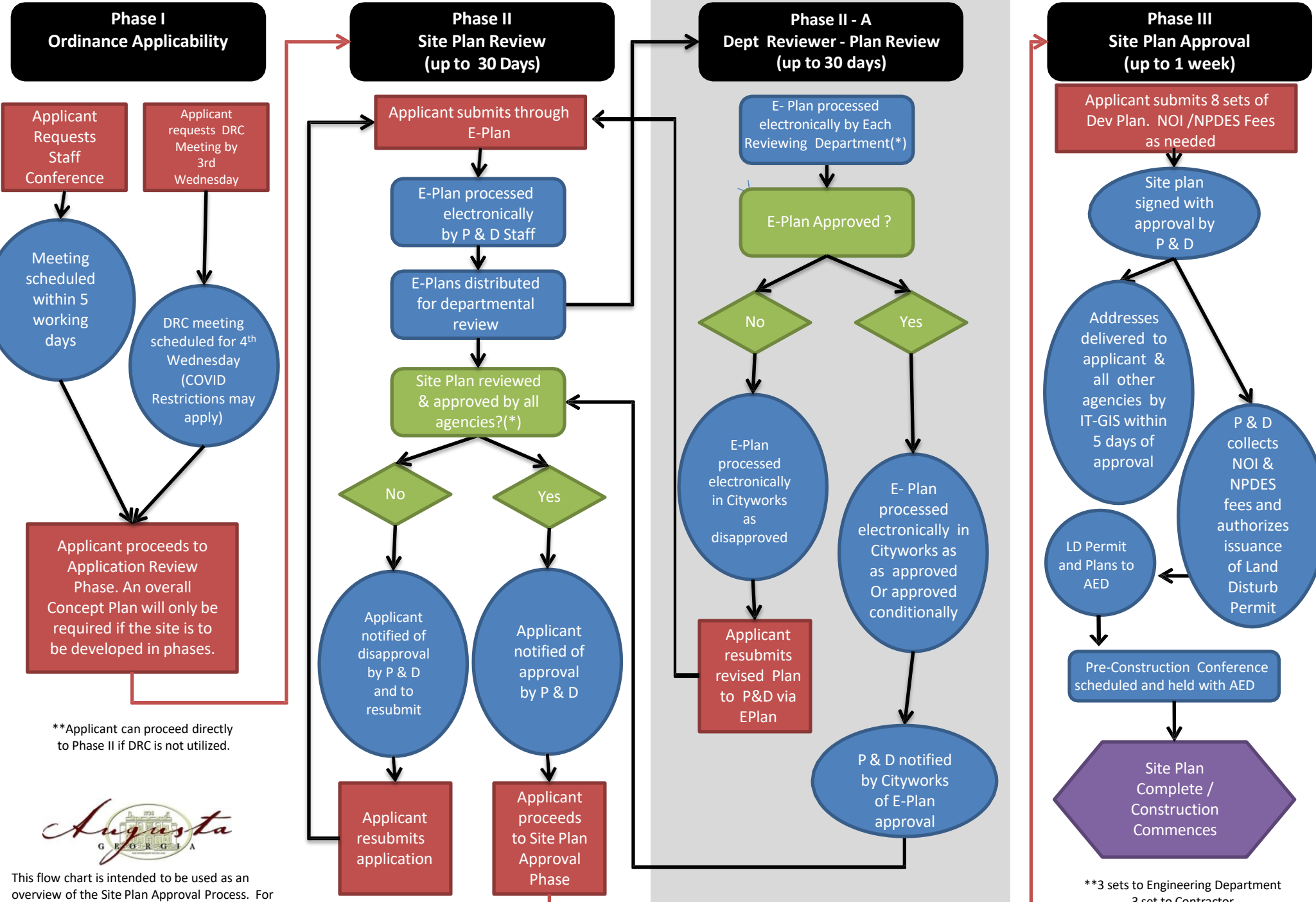


# Augusta Planning & Development Site Plan Submittal Flow Chart

Department/Agency  
Specific Phase



\*\*Applicant can proceed directly to Phase II if DRC is not utilized.



This flow chart is intended to be used as an overview of the Site Plan Approval Process. For more detailed information, see the Site Plan Regulations document on our website.

(\*) Comments available "live" as each department completes review on Development Project Search

\*\*3 sets to Engineering Department  
3 set to Contractor  
1 set to Utilities  
1 set to Planning & Development