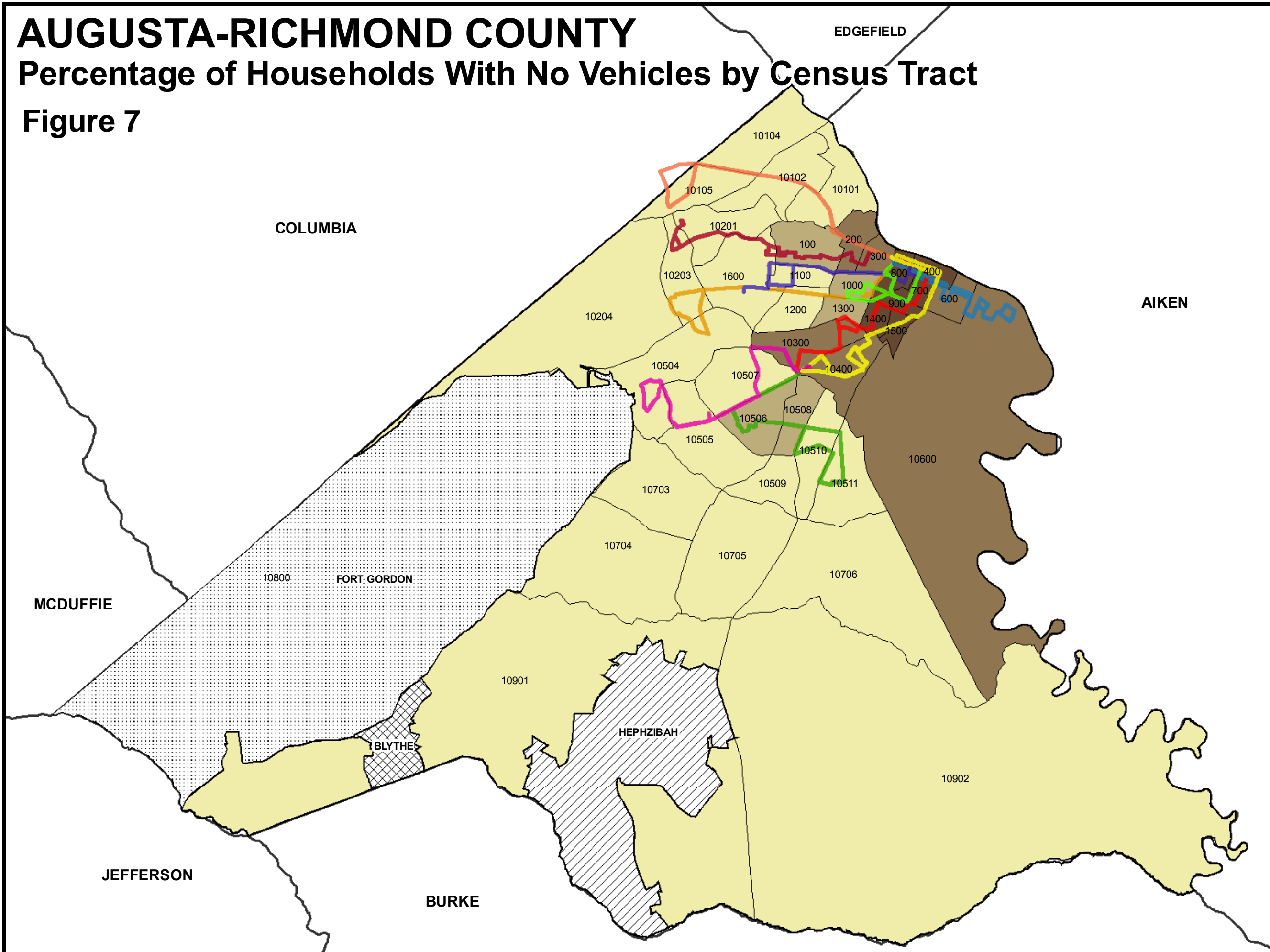


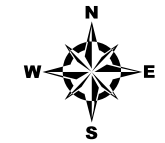
# AUGUSTA-RICHMOND COUNTY

## Percentage of Households With No Vehicles by Census Tract

Figure 7



### NO VEHICLES BY CENSUS TRACTS



Projection Stateplane  
Zone 3651  
Units Feet

0 0.5 1 2 3 Miles

SCALE 1:148,190

#### Legend

- AUGUSTA
- BLYTHE
- FORT GORDON
- HEPHZIBAH
- BUS ROUTES**
- # 1 Walton Way
- # 3 East Augusta
- # 4 Turpin Hill/Southgate Plz
- # 5 Washington Road
- # 6 Kmart
- # 10 Sand Hills
- # 12 Augusta Mall
- # 13 Barton Chapel
- # 15 Medical Complex Shuttle
- # 16 Lumpkin Road
- NO VEHICLE**
- 1.0 % - 13.2 %
- 13.2 % - 25.4 %
- 25.4 % - 37.6 %
- 37.6 % - 49.8 %

#### Augusta, GA Disclaimer

The data represented on this map has been compiled by the best methods available. Accuracy is contingent upon the source information as compiled by various agencies and departments both internal and external to the consolidated government of Augusta, GA. Augusta, GA and the companies contracted to develop these data assume no legal responsibilities for the information or accuracy contained on this map. It is strictly forbidden to sell or reproduce these maps or data for any reason without the written consent of the Augusta-Richmond County Commission.



Augusta-Richmond County Planning Commission  
525 Telfair Street  
Augusta, GA 30901  
www.augustaga.gov  
December 2007